

Mississippi State University Extension

2020 Soybean Variety Response to Iron Deficiency Chlorosis (IDC) – Virtual Plot Tour



MISSISSIPPI STATE
UNIVERSITY™

EXTENSION



2020 Soybean Maturity Group IV and V Enlist (E3) Varieties



MISSISSIPPI STATE
UNIVERSITY™

EXTENSION



2020 Soybean Maturity Group IV Enlist (E3) Varieties



MISSISSIPPI STATE
UNIVERSITY™

EXTENSION



Delta Grow 47E20/STS

Average IDC
Rating Score*:

5.0

*Tolerance scores were assigned on a scale of 1 to 10, with 1 being completely tolerant and 10 being completely susceptible.



IDC Susceptible
variety pictured
for comparison



MISSISSIPPI STATE
UNIVERSITY™

EXTENSION



Delta Grow 47E80/STS

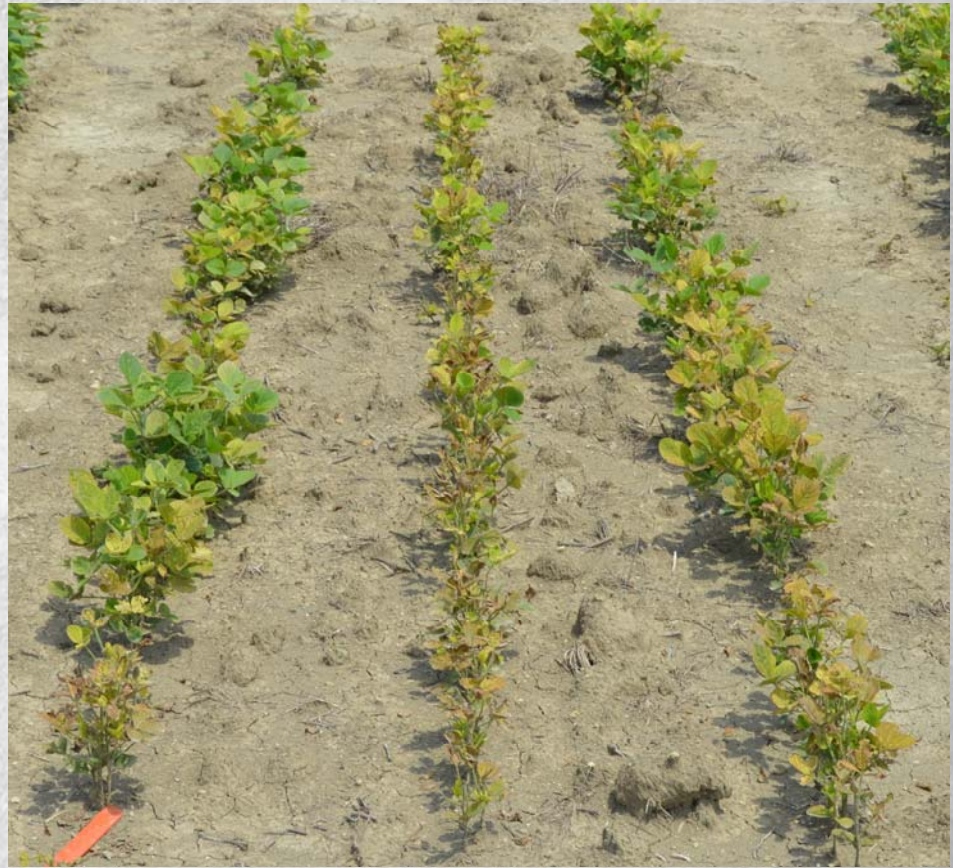
Average IDC
Rating Score*:

6.5

*Tolerance scores were assigned on a scale of 1 to 10, with 1 being completely tolerant and 10 being completely susceptible.



IDC Susceptible
variety pictured
for comparison



MISSISSIPPI STATE
UNIVERSITY™

EXTENSION



Delta Grow 48E10

Average IDC
Rating Score*:

3.8

*Tolerance scores were assigned on a scale of 1 to 10, with 1 being completely tolerant and 10 being completely susceptible.



IDC Susceptible
variety pictured
for comparison



MISSISSIPPI STATE
UNIVERSITY™

EXTENSION



Delta Grow 48E49/STS

Average IDC
Rating Score*:

4.2

*Tolerance scores were assigned on a scale of 1 to 10, with 1 being completely tolerant and 10 being completely susceptible.



IDC Susceptible
variety pictured
for comparison



MISSISSIPPI STATE
UNIVERSITY™

EXTENSION



Local Seed LSX4602ES

Average IDC
Rating Score*:

4.1

*Tolerance scores were assigned on a scale of 1 to 10, with 1 being completely tolerant and 10 being completely susceptible.



IDC Susceptible
variety pictured
for comparison



MISSISSIPPI STATE
UNIVERSITY™

EXTENSION



Delta Grow 49E00/STS

Average IDC
Rating Score*:

7.0

*Tolerance scores were assigned on a scale of 1 to 10, with 1 being completely tolerant and 10 being completely susceptible.



IDC Susceptible
variety pictured
for comparison



MISSISSIPPI STATE
UNIVERSITY™

EXTENSION



USG 7491ETS

Average IDC
Rating Score*:

5.7

*Tolerance scores were assigned on a scale of 1 to 10,
with 1 being completely tolerant and 10 being
completely susceptible.



IDC Susceptible
variety pictured
for comparison



MISSISSIPPI STATE
UNIVERSITY™

EXTENSION



GDM Seeds DM 48E73

Average IDC
Rating Score*:

2.5

*Tolerance scores were assigned on a scale of 1 to 10, with 1 being completely tolerant and 10 being completely susceptible.



IDC Susceptible
variety pictured
for comparison



MISSISSIPPI STATE
UNIVERSITY™

EXTENSION



Pioneer P49T62E

Average IDC
Rating Score*:

6.2

*Tolerance scores were assigned on a scale of 1 to 10, with 1 being completely tolerant and 10 being completely susceptible.



IDC Susceptible
variety pictured
for comparison



MISSISSIPPI STATE
UNIVERSITY™

EXTENSION



Progeny 4682E3

Average IDC
Rating Score*:

4.0

*Tolerance scores were assigned on a scale of 1 to 10,
with 1 being completely tolerant and 10 being
completely susceptible.



IDC Susceptible
variety pictured
for comparison



MISSISSIPPI STATE
UNIVERSITY™

EXTENSION



Progeny 4775E3S

Average IDC
Rating Score*:

1.6

*Tolerance scores were assigned on a scale of 1 to 10, with 1 being completely tolerant and 10 being completely susceptible.



IDC Susceptible
variety pictured
for comparison



MISSISSIPPI STATE
UNIVERSITY™

EXTENSION



Go Soy 463E20S

Average IDC
Rating Score*:

2.5

*Tolerance scores were assigned on a scale of 1 to 10, with 1 being completely tolerant and 10 being completely susceptible.



IDC Susceptible
variety pictured
for comparison



MISSISSIPPI STATE
UNIVERSITY™

EXTENSION



Go Soy 473E20

Average IDC
Rating Score*:

6.8

*Tolerance scores were assigned on a scale of 1 to 10, with 1 being completely tolerant and 10 being completely susceptible.



IDC Susceptible
variety pictured
for comparison



MISSISSIPPI STATE
UNIVERSITY™

EXTENSION



Go Soy 481E19

Average IDC
Rating Score*:

3.2

*Tolerance scores were assigned on a scale of 1 to 10, with 1 being completely tolerant and 10 being completely susceptible.



IDC Susceptible
variety pictured
for comparison



MISSISSIPPI STATE
UNIVERSITY™

EXTENSION



MorSoy MS 4800E

Average IDC
Rating Score*:

6.0

*Tolerance scores were assigned on a scale of 1 to 10, with 1 being completely tolerant and 10 being completely susceptible.



IDC Susceptible
variety pictured
for comparison



MISSISSIPPI STATE
UNIVERSITY™

EXTENSION



2020 Soybean Maturity Group V Enlist (E3) Varieties



MISSISSIPPI STATE
UNIVERSITY™

EXTENSION



Delta Grow 52E15/STS

Average IDC
Rating Score*:

2.8

*Tolerance scores were assigned on a scale of 1 to 10, with 1 being completely tolerant and 10 being completely susceptible.



IDC Susceptible
variety pictured
for comparison



MISSISSIPPI STATE
UNIVERSITY™

EXTENSION



Local Seed ZS5098E3

Average IDC
Rating Score*:

3.0

*Tolerance scores were assigned on a scale of 1 to 10, with 1 being completely tolerant and 10 being completely susceptible.



IDC Susceptible
variety pictured
for comparison



MISSISSIPPI STATE
UNIVERSITY™

EXTENSION



Delta Grow 51E60

Average IDC
Rating Score*:

5.5

*Tolerance scores were assigned on a scale of 1 to 10, with 1 being completely tolerant and 10 being completely susceptible.



IDC Susceptible
variety pictured
for comparison



MISSISSIPPI STATE
UNIVERSITY™

EXTENSION



Progeny 5211E3

Average IDC
Rating Score*:

6.8

*Tolerance scores were assigned on a scale of 1 to 10, with 1 being completely tolerant and 10 being completely susceptible.



IDC Susceptible
variety pictured
for comparison



MISSISSIPPI STATE
UNIVERSITY™

EXTENSION



Go Soy 512E21

Average IDC
Rating Score*:

5.7

*Tolerance scores were assigned on a scale of 1 to 10, with 1 being completely tolerant and 10 being completely susceptible.



IDC Susceptible
variety pictured
for comparison



MISSISSIPPI STATE
UNIVERSITY™

EXTENSION



MorSoy MS 5110E

Average IDC
Rating Score*:

5.2

*Tolerance scores were assigned on a scale of 1 to 10, with 1 being completely tolerant and 10 being completely susceptible.



IDC Susceptible
variety pictured
for comparison



MISSISSIPPI STATE
UNIVERSITY™

EXTENSION

